

Calendar

MUSTANG

Images of a bygone era by Toni Hagen

2013



Chhortens at Tangbe, the first village along the trail to Upper Mustang.



The village of Tsekyap by the side of the River Kali Gandaki.

January

2013

TUE	WED	THU	FRI	SAT	SUN	MON	TUE	WED	THU	FRI	SAT	SUN	MON	TUE	WED	THU
1	2	3	4	5	6	7	8	9	10	11	12	13	14	15	16	17
			18	19	20	21	22	23	24	25	26	27	28	29	30	31

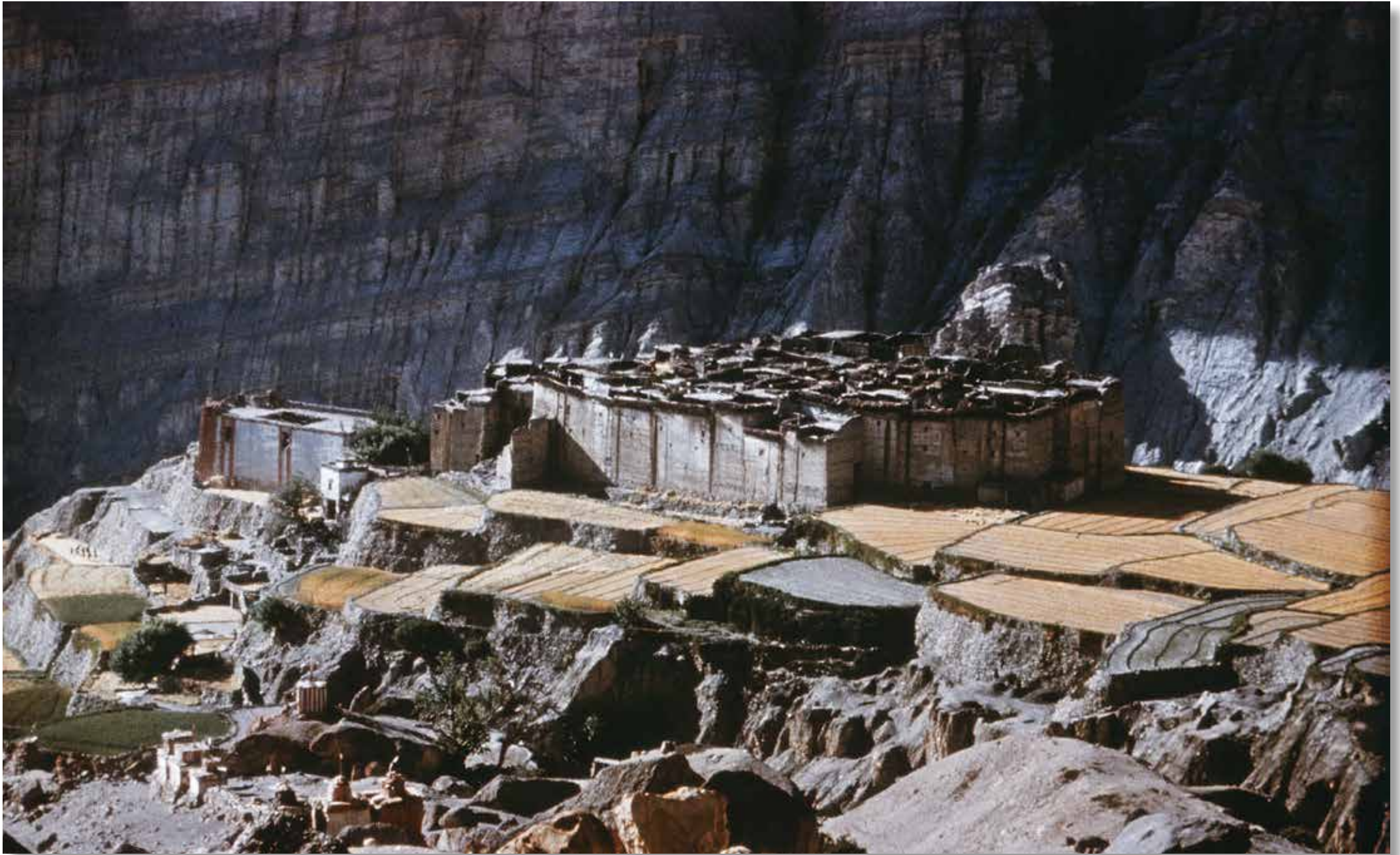


The River Kali Gandaki issues out of the narrow canyon just below the village of Chele.

February

2013

FRI	SAT	SUN	MON	TUE	WED	THU	FRI	SAT	SUN	MON	TUE	WED	THU	FRI	SAT	SUN
1	2	3	4	5	6	7	8	9	10	11	12	13	14	15	16	17
			18	19	20	21	22	23	24	25	26	27	28			



The village of Tetang lies off the main trail to Lo Manthang.

March

2013

FRI	SAT	SUN	MON	TUE	WED	THU	FRI	SAT	SUN	MON	TUE	WED	THU	FRI	SAT	SUN
1	2	3	4	5	6	7	8	9	10	11	12	13	14	15	16	17
			18	19	20	21	22	23	24	25	26	27	28	29	30	31



With the backdrop of Buddhist chortens on the way to Lo Manthang, Toni Hagen's team present a spectacle to the local residents of Mustang.

April

2013

MON	TUE	WED	THU	FRI	SAT	SUN	MON	TUE	WED	THU	FRI	SAT	SUN	MON	TUE	WED
1	2	3	4	5	6	7	8	9	10	11	12	13	14	15	16	17
			18	19	20	21	22	23	24	25	26	27	28	29	30	



Looking north following the gorge created by the River Kali Gandaki.

May

2013

WED	THU	FRI	SAT	SUN	MON	TUE	WED	THU	FRI	SAT	SUN	MON	TUE	WED	THU	FRI
1	2	3	4	5	6	7	8	9	10	11	12	13	14	15	16	17
			18	19	20	21	22	23	24	25	26	27	28	29	30	31



A section of the village of Gheling on the way to Lo Manthang.

June

2013

SAT	SUN	MON	TUE	WED	THU	FRI	SAT	SUN	MON	TUE	WED	THU	FRI	SAT	SUN	MON
1	2	3	4	5	6	7	8	9	10	11	12	13	14	15	16	17
			18	19	20	21	22	23	24	25	26	27	28	29	30	



The main wall at Charang Monastery is still a much-visited site in Mustang.

July														2013		
MON	TUE	WED	THU	FRI	SAT	SUN	MON	TUE	WED	THU	FRI	SAT	SUN	MON	TUE	WED
1	2	3	4	5	6	7	8	9	10	11	12	13	14	15	16	17
			18	19	20	21	22	23	24	25	26	27	28	29	30	31



Tibetan traders carrying wool and salt resting by the great Sumit chhorten near the pass leading into Lo Manthang.

August

2013

THU	FRI	SAT	SUN	MON	TUE	WED	THU	FRI	SAT	SUN	MON	TUE	WED	THU	FRI	SAT
1	2	3	4	5	6	7	8	9	10	11	12	13	14	15	16	17
			18	19	20	21	22	23	24	25	26	27	28	29	30	31



Horse stable inside the walled city of Lo Manthang.

September

2013

SUN	MON	TUE	WED	THU	FRI	SAT	SUN	MON	TUE	WED	THU	FRI	SAT	SUN	MON	TUE
1	2	3	4	5	6	7	8	9	10	11	12	13	14	15	16	17
			18	19	20	21	22	23	24	25	26	27	28	29	30	



Lo Manthang, the capital of Mustang, is a walled city that still shuts its gates at nightfall.

October

2013

TUE	WED	THU	FRI	SAT	SUN	MON	TUE	WED	THU	FRI	SAT	SUN	MON	TUE	WED	THU
1	2	3	4	5	6	7	8	9	10	11	12	13	14	15	16	17
			18	19	20	21	22	23	24	25	26	27	28	29	30	31

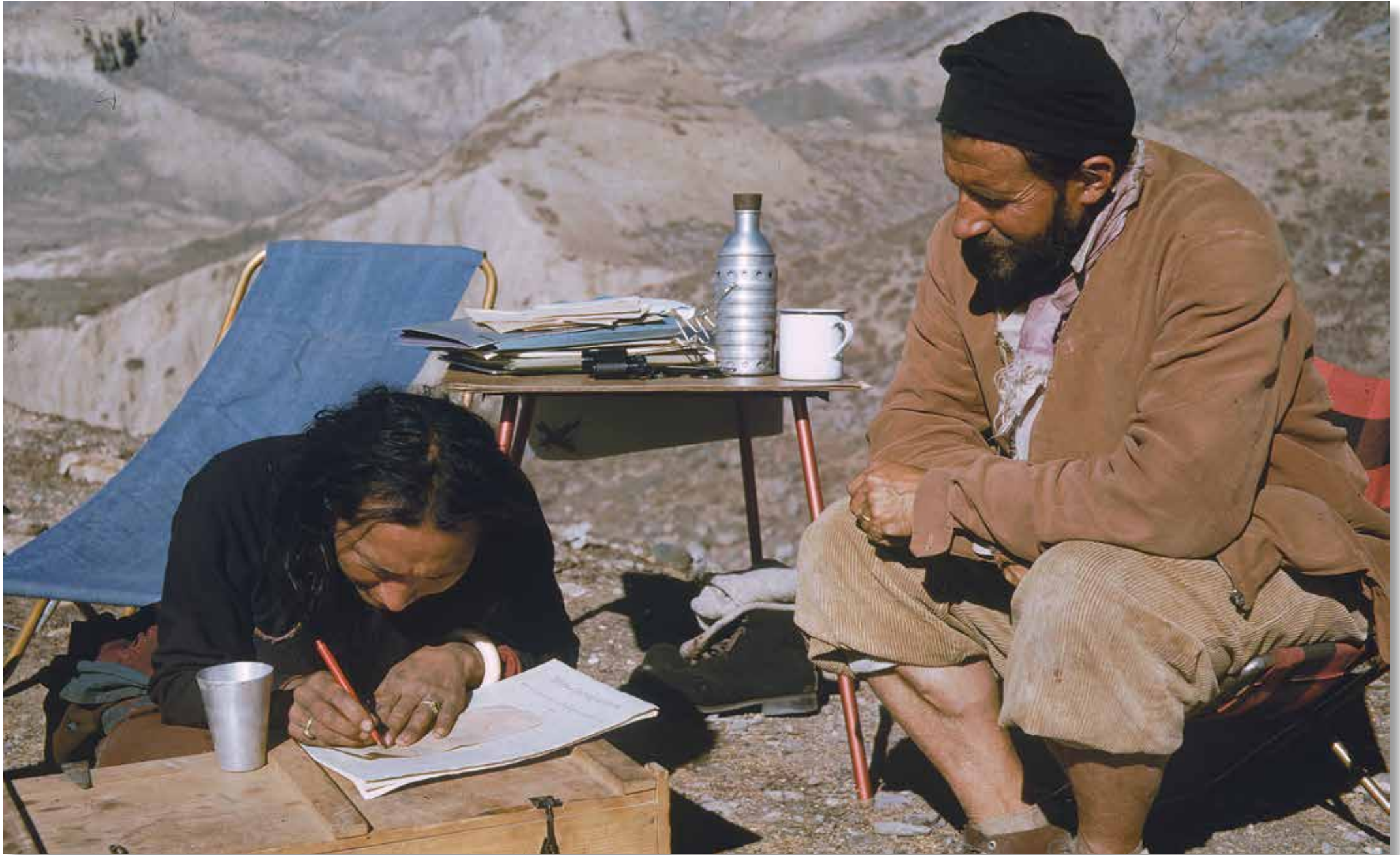


The pilgrimage site of Muktinath with the Dhaulagiri massif towering in the background.

November

2013

FRI	SAT	SUN	MON	TUE	WED	THU	FRI	SAT	SUN	MON	TUE	WED	THU	FRI	SAT	SUN
1	2	3	4	5	6	7	8	9	10	11	12	13	14	15	16	17
			18	19	20	21	22	23	24	25	26	27	28	29	30	



Toni Hagen interacting with a local at his 'field office' set up near Muktinath.

December

2013

SUN	MON	TUE	WED	THU	FRI	SAT	SUN	MON	TUE	WED	THU	FRI	SAT	SUN	MON	TUE
1	2	3	4	5	6	7	8	9	10	11	12	13	14	15	16	17
		18	19	20	21	22	23	24	25	26	27	28	29	30	31	



JANUARY



FEBRUARY



MARCH



APRIL



MAY



JUNE



JULY



AUGUST



SEPTEMBER



OCTOBER



NOVEMBER



DECEMBER



Toni Hagen (1917-2003)

Swiss geologist Toni Hagen first came to Nepal in 1950 as part of a technical assistance team sent by the Swiss government to help with the tentative steps at introducing western-style development. That was an era when foreigners had to seek government permission to travel outside the Kathmandu Valley. As the geologist in the Swiss team, Hagen was allowed to go around the countryside, an experience that whetted his desire to see more of this 'unknown' land. Thus began a relationship with a country that grew into a close friendship over the course of half a century.

Toni Hagen was later taken over by the United Nations to conduct the first geological survey of Nepal, making him the original 'UN expert' in the country. He spent nearly a decade doing that during which he travelled more than 14,000 km on foot. His explorations took him all over Nepal and he saw the country like no one else had before him, and very few have since. Hagen's experience of those early days, his geological findings and his views on the society and economy of Nepal have been documented in *Nepal: The Kingdom in the Himalaya* (4th ed, Himal Books, Kathmandu, 1998). Hagen's colour photographs in the book for the first time exposed the social diversity and varied landscape of Nepal. This was a landmark book which introduced Nepal to the world and to Nepalis themselves.

With time, Hagen became deeply involved in the study and practice of development in Asia and elsewhere. But he always kept a keen interest in what was happening in Nepal. He continued to critique Nepal's path to progress and never faltered in his belief that socioeconomic advancement was not possible without genuine democracy achieved through decentralisation. For his contribution to scholarship on Nepal, in 1984 the then Royal Nepal Academy awarded him the 'Birendra Pragyalankar', the highest recognition given by the Nepali state to foreign scholars.

The Toni Hagen Foundation Nepal was set up in 2000 to continue the work begun by Toni Hagen long ago to promote an understanding of the Himalaya and its geography, among Nepalis themselves and in the outside world. This calendar is part of the same attempt and contains pictures taken from the 1950s by Toni Hagen. The slides from the Toni Hagen collection were made available by his family

Calendar © Toni Hagen Foundation Nepal



Toni Hagen Foundation Nepal
PO Box 166, Lalitpur, Nepal
Phone: +977-1-5542544
Fax: +977-1-5541196
e-mail: thf-n@himalassociation.org

**Printed & Distributed by
Himalayan Map House (Pvt. Ltd.)**