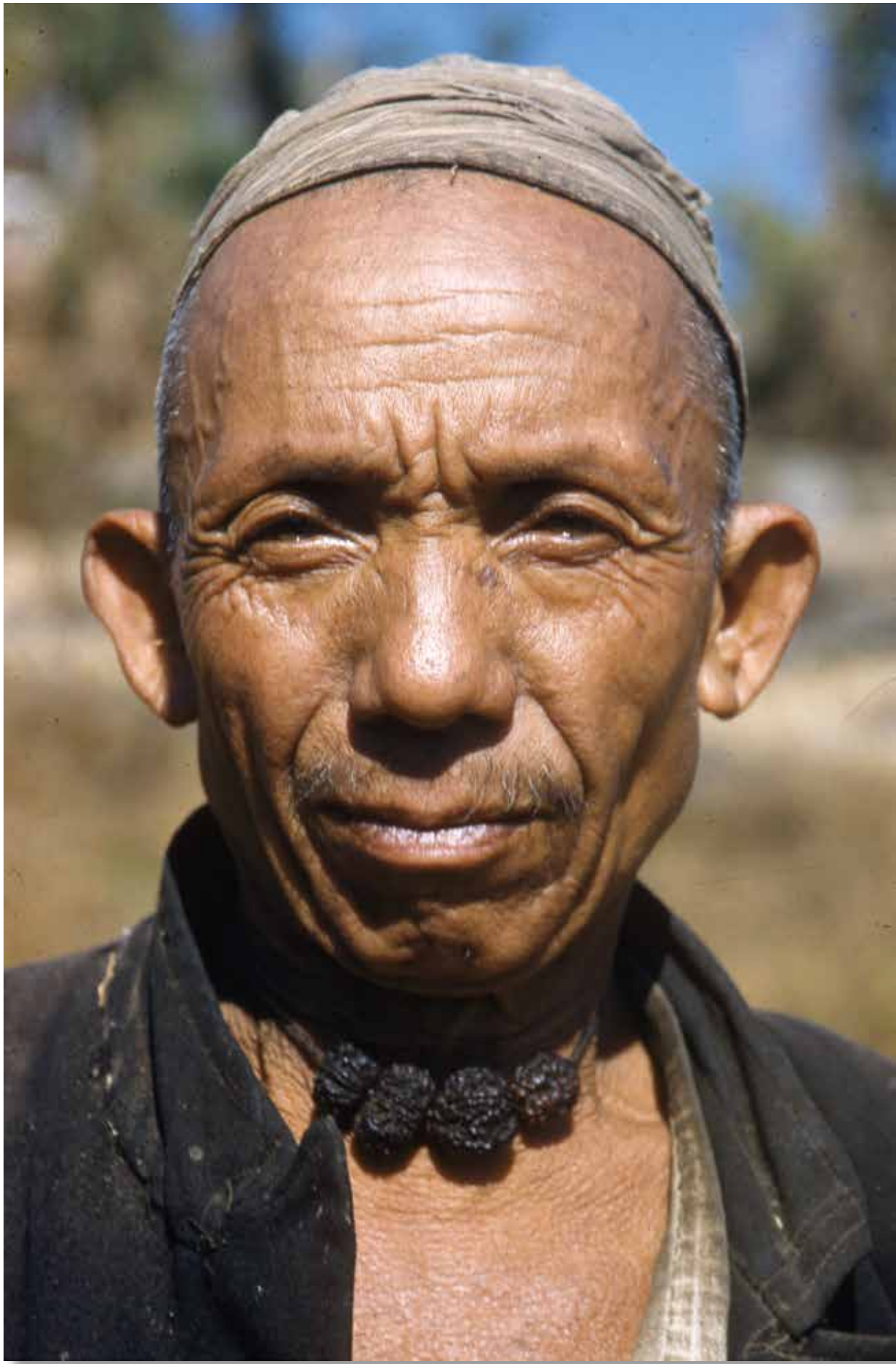


NEPALI FACES

Images of a bygone era by Toni Hagen



Tharu gentry from Dang.



A Raji farmer from Bardiya .

January

2016

FRI	SAT	SUN	MON	TUE	WED	THU	FRI	SAT	SUN	MON	TUE	WED	THU	FRI	SAT	SUN
1	2	3	4	5	6	7	8	9	10	11	12	13	14	15	16	17
			18	19	20	21	22	23	24	25	26	27	28	29	30	31



Thakuri from western Nepal.

February

2016

MON	TUE	WED	THU	FRI	SAT	SUN	MON	TUE	WED	THU	FRI	SAT	SUN	MON	TUE	WED
1	2	3	4	5	6	7	8	9	10	11	12	13	14	15	16	17
		18	19	20	21	22	23	24	25	26	27	28	29			



Thakuri from Thibra Karnali, western Nepal, with a typical Nepali *chillum*.

March

2016

TUE	WED	THU	FRI	SAT	SUN	MON	TUE	WED	THU	FRI	SAT	SUN	MON	TUE	WED	THU
1	2	3	4	5	6	7	8	9	10	11	12	13	14	15	16	17
		18	19	20	21	22	23	24	25	26	27	28	29	30	31	



Official during the Rana regime.

April

2016

FRI	SAT	SUN	MON	TUE	WED	THU	FRI	SAT	SUN	MON	TUE	WED	THU	FRI	SAT	SUN
1	2	3	4	5	6	7	8	9	10	11	12	13	14	15	16	17
			18	19	20	21	22	23	24	25	26	27	28	29	30	

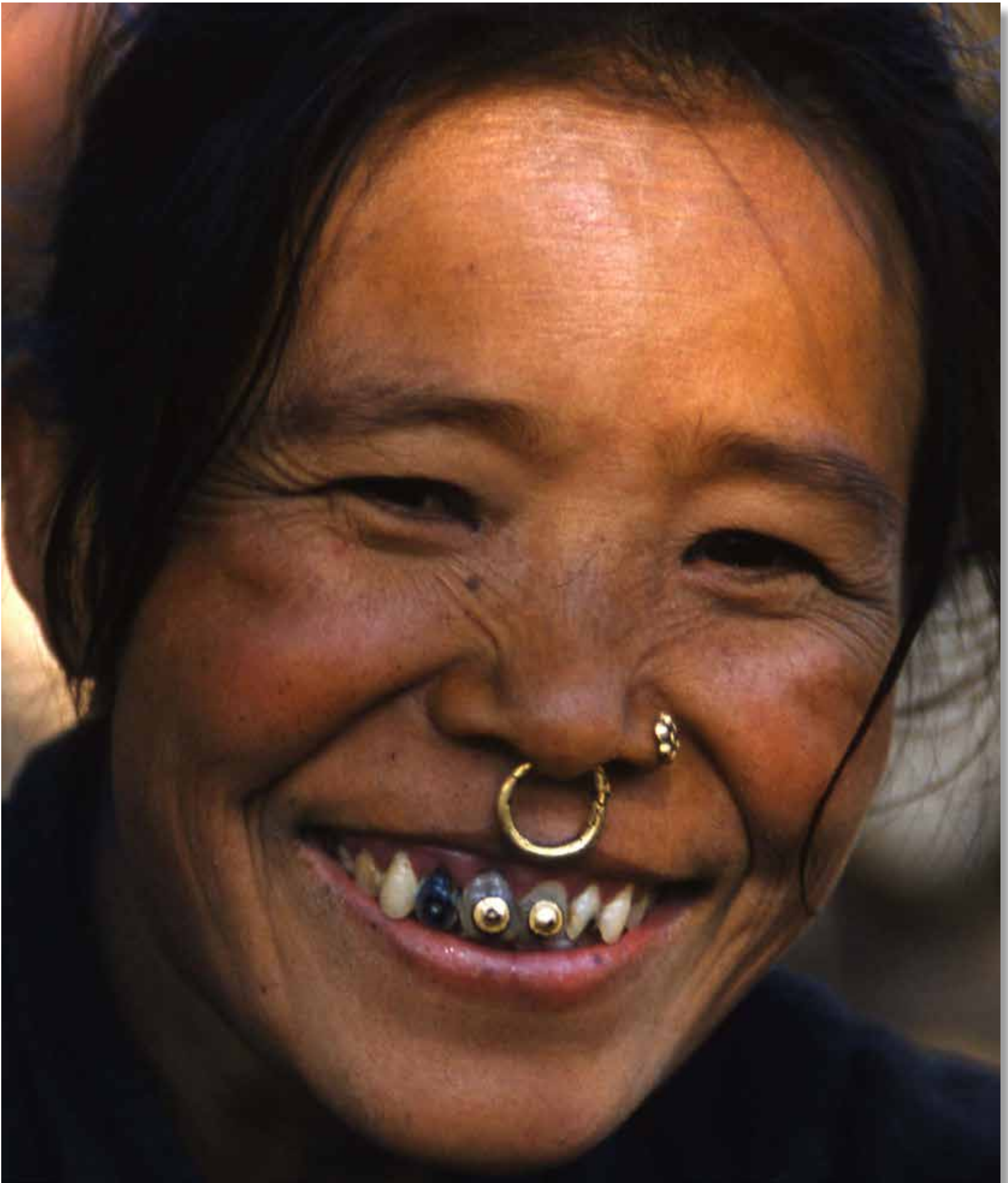


A Chhetri farmer from Jubithan near Jumla.

May

2016

SUN	MON	TUE	WED	THU	FRI	SAT	SUN	MON	TUE	WED	THU	FRI	SAT	SUN	MON	TUE
1	2	3	4	5	6	7	8	9	10	11	12	13	14	15	16	17
		18	19	20	21	22	23	24	25	26	27	28	29	30	31	



A Rai woman from Dhankuta.

June

2016

WED	THU	FRI	SAT	SUN	MON	TUE	WED	THU	FRI	SAT	SUN	MON	TUE	WED	THU	FRI
1	2	3	4	5	6	7	8	9	10	11	12	13	14	15	16	17
			18	19	20	21	22	23	24	25	26	27	28	29	30	



Woman from Dolpo.

July

2016

FRI	SAT	SUN	MON	TUE	WED	THU	FRI	SAT	SUN	MON	TUE	WED	THU	FRI	SAT	SUN
1	2	3	4	5	6	7	8	9	10	11	12	13	14	15	16	17
			18	19	20	21	22	23	24	25	26	27	28	29	30	31

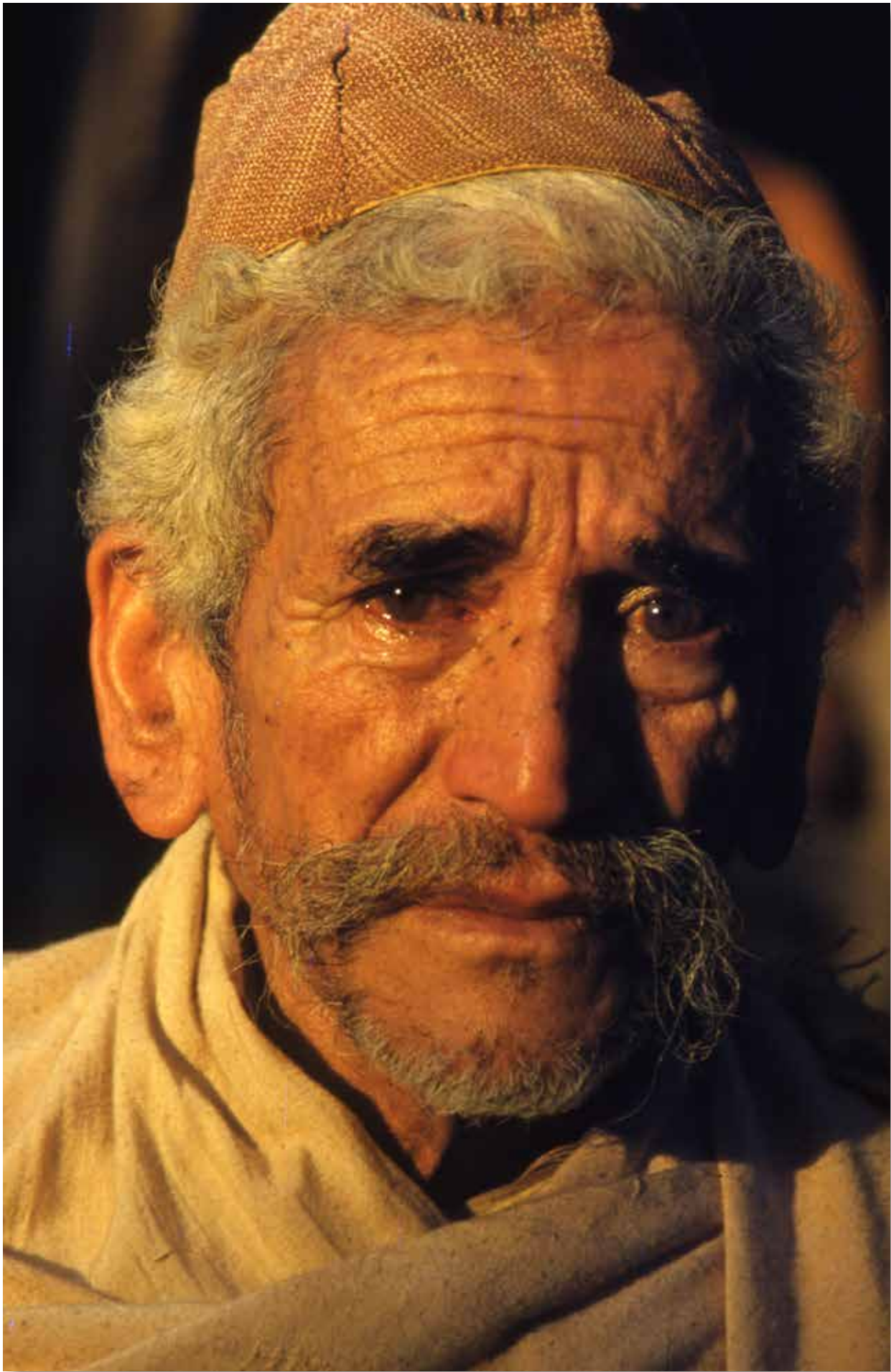


A Sherpa woman from Thudam (north eastern Nepal near Tibetan border, Olangchung).

August

2016

MON	TUE	WED	THU	FRI	SAT	SUN	MON	TUE	WED	THU	FRI	SAT	SUN	MON	TUE	WED
1	2	3	4	5	6	7	8	9	10	11	12	13	14	15	16	17
			18	19	20	21	22	23	24	25	26	27	28	29	30	31

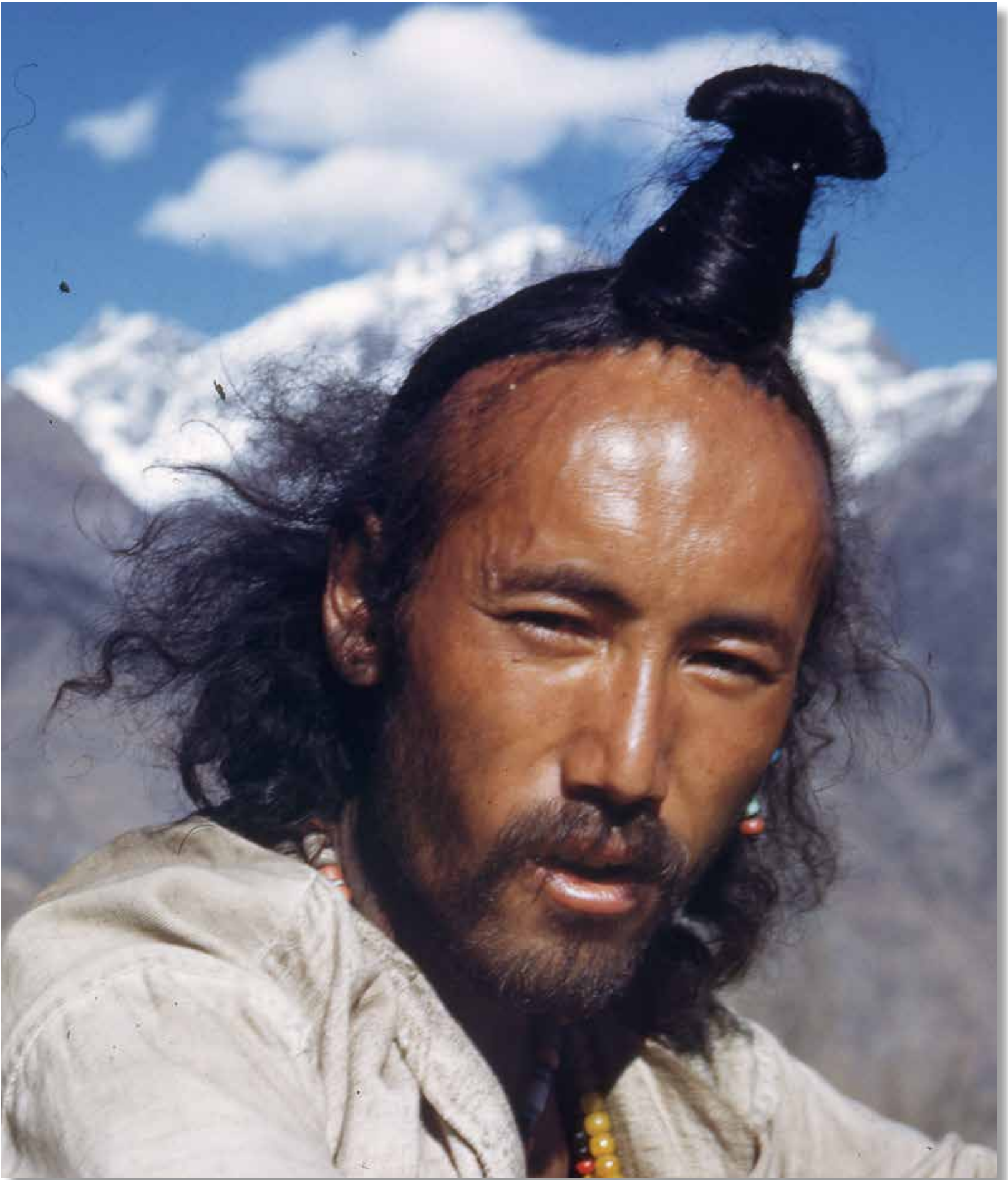


A Brahmin man from far-west Tarai.

September

2016

THU	FRI	SAT	SUN	MON	TUE	WED	THU	FRI	SAT	SUN	MON	TUE	WED	THU	FRI	SAT
1	2	3	4	5	6	7	8	9	10	11	12	13	14	15	16	17
			18	19	20	21	22	23	24	25	26	27	28	29	30	

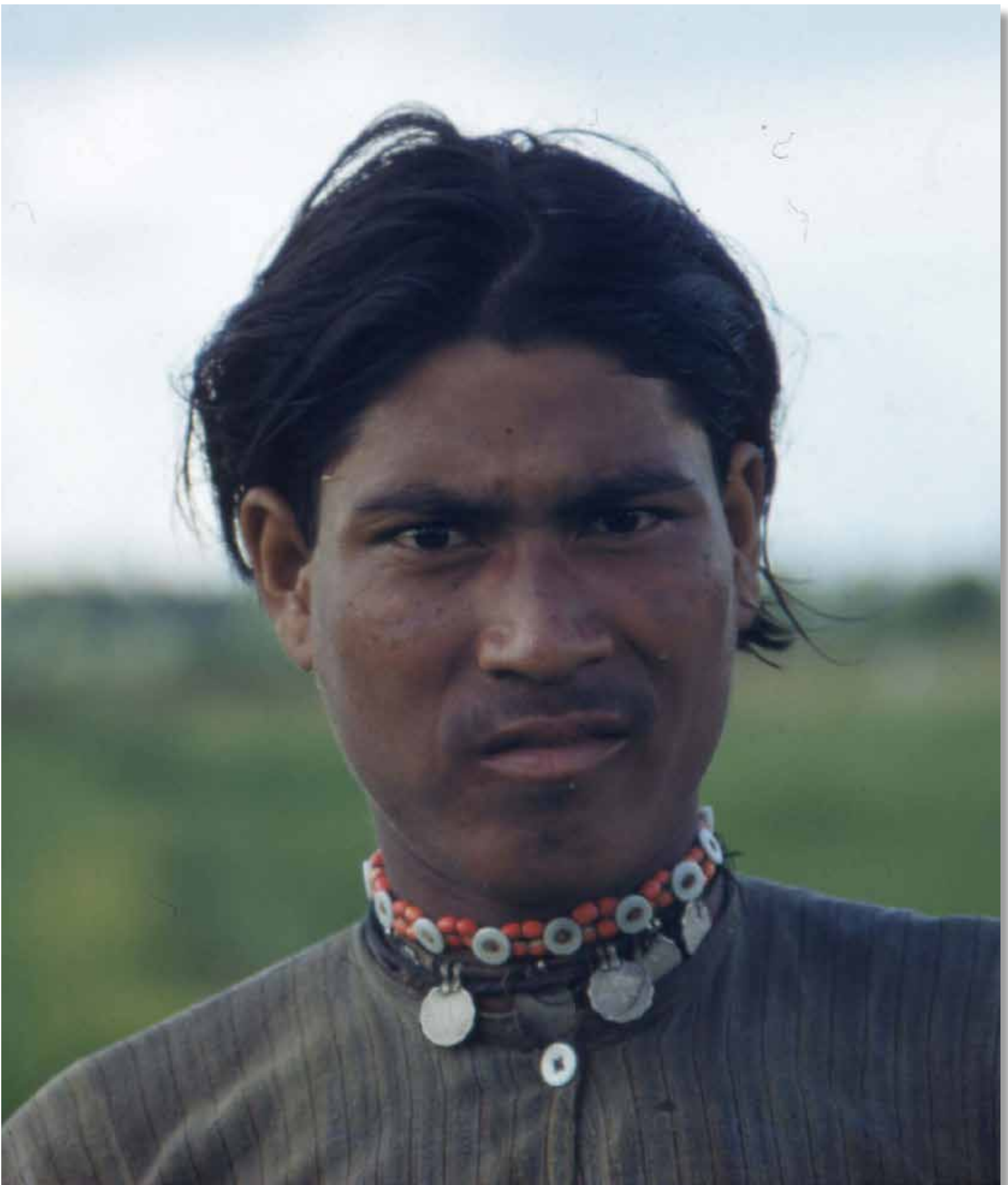


Yak driver of a salt caravan from Limitang at Simikot north western Nepal.

October

2016

SAT	SUN	MON	TUE	WED	THU	FRI	SAT	SUN	MON	TUE	WED	THU	FRI	SAT	SUN	MON
1	2	3	4	5	6	7	8	9	10	11	12	13	14	15	16	17
		18	19	20	21	22	23	24	25	26	27	28	29	30	31	

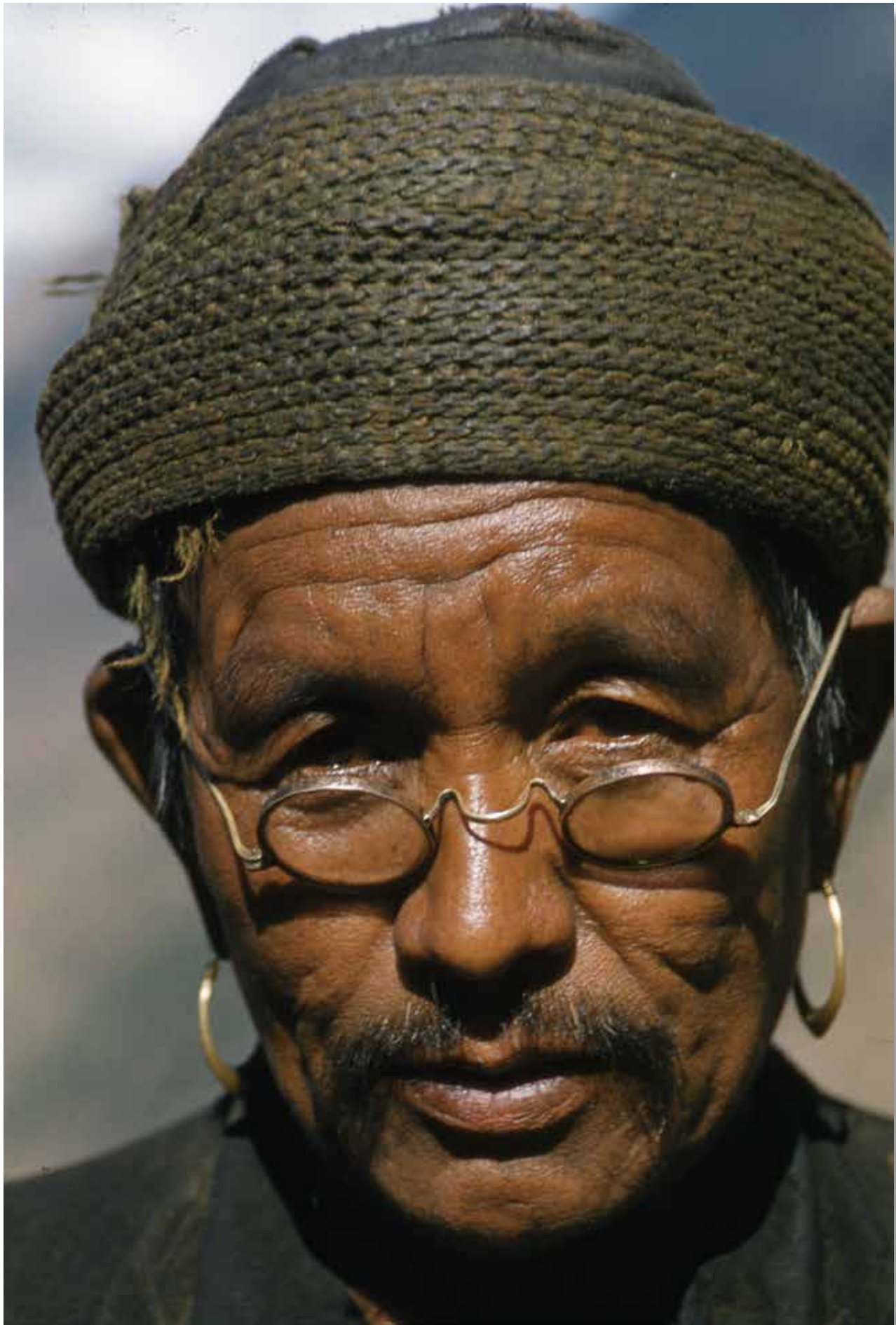


Trader from south Dolpo.

November

2016

TUE	WED	THU	FRI	SAT	SUN	MON	TUE	WED	THU	FRI	SAT	SUN	MON	TUE	WED	THU
1	2	3	4	5	6	7	8	9	10	11	12	13	14	15	16	17
		18	19	20	21	22	23	24	25	26	27	28	29	30		



Headman of Gharkhani, west.

December

2016

THU	FRI	SAT	SUN	MON	TUE	WED	THU	FRI	SAT	SUN	MON	TUE	WED	THU	FRI	SAT
1	2	3	4	5	6	7	8	9	10	11	12	13	14	15	16	17
			18	19	20	21	22	23	24	25	26	27	28	29	30	31



JANUARY



FEBRUARY



MARCH



APRIL



MAY



JUNE



JULY



AUGUST



SEPTEMBER



OCTOBER



NOVEMBER



DECEMBER

Annapurna II (7937 m), unlike other Himalayan peaks, looks like a 'taut black tent' in the horizon while Toni Hagen is comfortable taking notes of his journey.



Captions for this calendar were given by botanist and conservationist, Dr Tirtha Bahadur Shrestha, a member of the Toni Hagen Foundation Nepal.

Toni Hagen (1917-2003)
Calendar Toni Hagen Foundation Nepal
Toni Hagen Foundation Nepal
540 Lazimpat, Kathmandu-2, Nepal
Phone: +977-1-4440635
Fax: +977-1-4001596
e-mail: thf-n@himalassociation.org

**Printed & Distributed by
Himalayan Map House (Pvt. Ltd.)**

Swiss geologist Toni Hagen first came to Nepal in 1950 as part of a technical assistance team sent by the Swiss government. That was an era when foreigners had to seek government permission to travel outside the Kathmandu Valley. As the geologist in the Swiss team, Hagen was allowed to go around the countryside, an experience that whetted his desire to see more of this 'unknown' land. Thus began a relationship with a country that grew into a close friendship over the course of half a century.

Toni Hagen was later taken over by the United Nations making him the original 'UN expert' in the country. He spent nearly a decade travelling more than 14,000 km on foot. His explorations took him all over Nepal and he saw the country like no one else had before him, and very few have since. Hagen's experience of those early days, his geological findings and his views on the society and economy of Nepal have been documented in *Nepal: The Kingdom in the Himalaya* (4th ed, Himal Books, Kathmandu, 1998). Hagen's colour photographs in the book for the first time exposed the social diversity and varied landscape of Nepal. This was a landmark book which introduced Nepal to the world and to Nepalis themselves.

With time, Hagen became deeply involved in the study and practice of development in Asia and elsewhere. But he always kept a keen interest in what was happening in Nepal. He continued to critique Nepal's path to progress and never faltered in his belief that socioeconomic advancement was not possible without genuine democracy achieved through decentralisation. For his contribution to scholarship on Nepal, in 1984, the Royal Nepal Academy awarded him the Birendra Pragyalankar, the highest recognition give by the Nepali state to foreign scholars.

The Toni Hagen Foundation Nepal was set up in 2000 to continue the work begun by Toni Hagen long ago to promote an understanding of the Himalaya and its geography, among Nepalis themselves and in the outside world. This calendar is part of the same attempt and contains pictures taken from the 1950s by Toni Hagen. The slides from the Toni Hagen collection were made available by his family.