

WESTERN NEPAL

Calendar 2023



Images of a bygone era by Toni Hagen

Woman climbing on the roof. All houses had these typical stairs, they used the roof for drying many items.



Simikot or village near Simikot view towards northeast into Dozam valley.

January 2023

SUN	MON	TUE	WED	THU	FRI	SAT	SUN	MON	TUE	WED	THU	FRI	SAT	SUN	MON	TUE
1	2	3	4	5	6	7	8	9	10	11	12	13	14	15	16	17
			18	19	20	21	22	23	24	25	26	27	28	29	30	31



Tumkot village and Gompa. Tumkot is a village between Simikot and Nara La on the old trading route to Kojarnath Tibet, Mt Kailas and Manasarowar lake.

February 2023

WED	THU	FRI	SAT	SUN	MON	TUE	WED	THU	FRI	SAT	SUN	MON	TUE	WED	THU	FRI
1	2	3	4	5	6	7	8	9	10	11	12	13	14	15	16	17
			18	19	20	21	22	23	24	25	26	27	28			



Trail west of Puiya. This trail connects Budi Gandaki over Sankha La with Nara La and Tibet.

March 2023

WED	THU	FRI	SAT	SUN	MON	TUE	WED	THU	FRI	SAT	SUN	MON	TUE	WED	THU	FRI
1	2	3	4	5	6	7	8	9	10	11	12	13	14	15	16	17
			18	19	20	21	22	23	24	25	26	27	28	29	30	31



Old man from Chala.

April 2023

SAT	SUN	MON	TUE	WED	THU	FRI	SAT	SUN	MON	TUE	WED	THU	FRI	SAT	SUN	MON
1	2	3	4	5	6	7	8	9	10	11	12	13	14	15	16	17
			18	19	20	21	22	23	24	25	26	27	28	29	30	



Chala. Chala was a big village on the important salt trade route from Tibet, Nara La and Sankha La to Budi Gandaki valley.

May 2023

MON	TUE	WED	THU	FRI	SAT	SUN	MON	TUE	WED	THU	FRI	SAT	SUN	MON	TUE	WED
1	2	3	4	5	6	7	8	9	10	11	12	13	14	15	16	17
			18	19	20	21	22	23	24	25	26	27	28	29	30	31



View from the pass towards northwest upper Humla Karnali valley and Nara La far behind.

June 2023

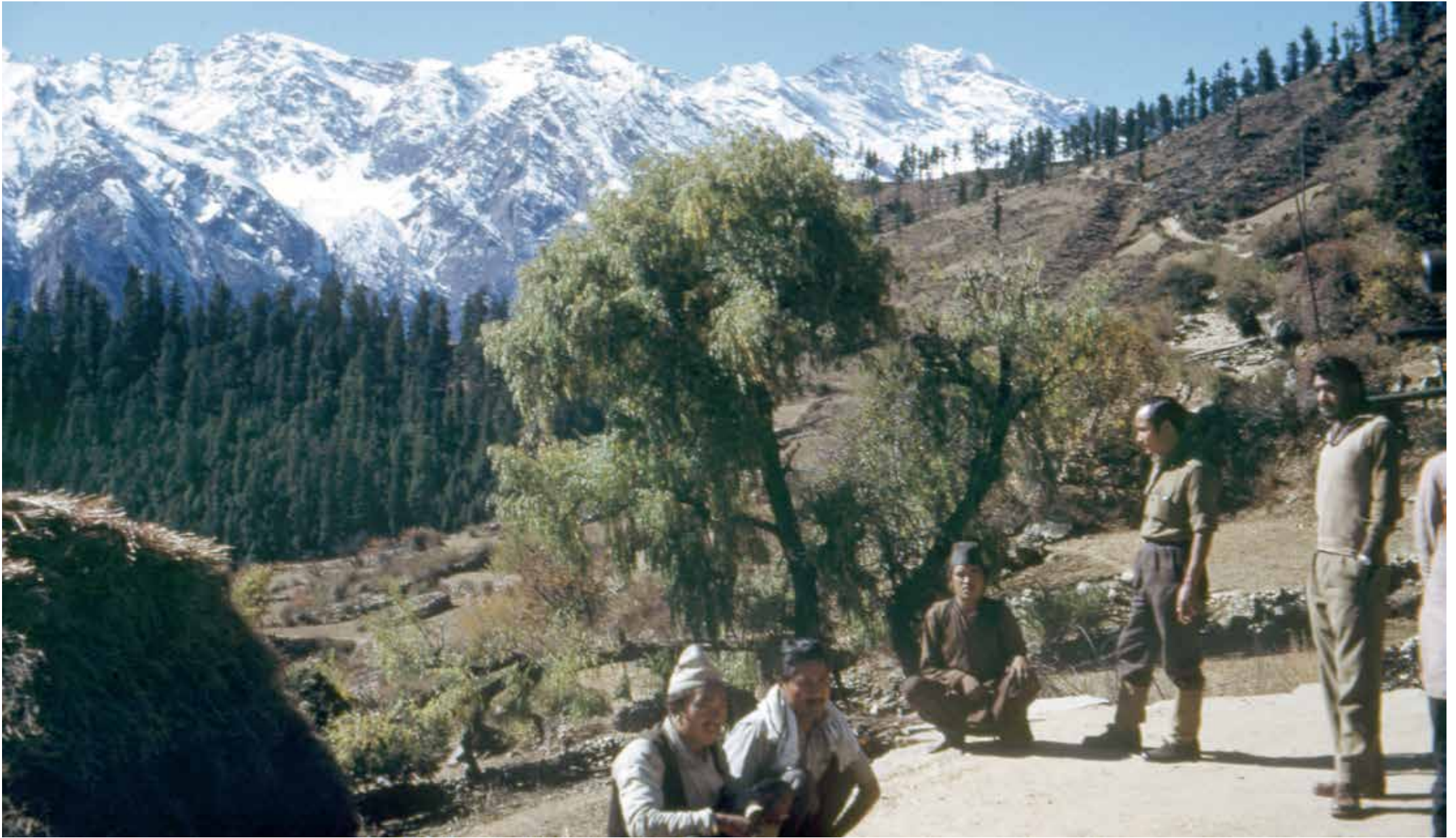
THU	FRI	SAT	SUN	MON	TUE	WED	THU	FRI	SAT	SUN	MON	TUE	WED	THU	FRI	SAT
1	2	3	4	5	6	7	8	9	10	11	12	13	14	15	16	17
			18	19	20	21	22	23	24	25	26	27	28	29	30	



View from the pass between Chala and Puija towards north into Chungsa Khola (Salli Khola), which leads to Ninian La (Nyalu La)

July 2023

SAT	SUN	MON	TUE	WED	THU	FRI	SAT	SUN	MON	TUE	WED	THU	FRI	SAT	SUN	MON
1	2	3	4	5	6	7	8	9	10	11	12	13	14	15	16	17
			18	19	20	21	22	23	24	25	26	27	28	29	30	31



Check post at Simikot.

August 2023

TUE	WED	THU	FRI	SAT	SUN	MON	TUE	WED	THU	FRI	SAT	SUN	MON	TUE	WED	THU
1	2	3	4	5	6	7	8	9	10	11	12	13	14	15	16	17
			18	19	20	21	22	23	24	25	26	27	28	29	30	31



House in upper Humla Karnali.

September 2023

FRI	SAT	SUN	MON	TUE	WED	THU	FRI	SAT	SUN	MON	TUE	WED	THU	FRI	SAT
1	2	3	4	5	6	7	8	9	10	11	12	13	14	15	16
		17	18	19	20	21	22	23	24	25	26	27	28	29	30



Yak caravan going back to Tibet over Sechi La carrying rice. Another important trading route from Tibet to South was over Sankha La, Sechi La and Lapcha La to Mansarovar lake. View towards south Karnali valley and Sanka La east of Saipal.

October 2023

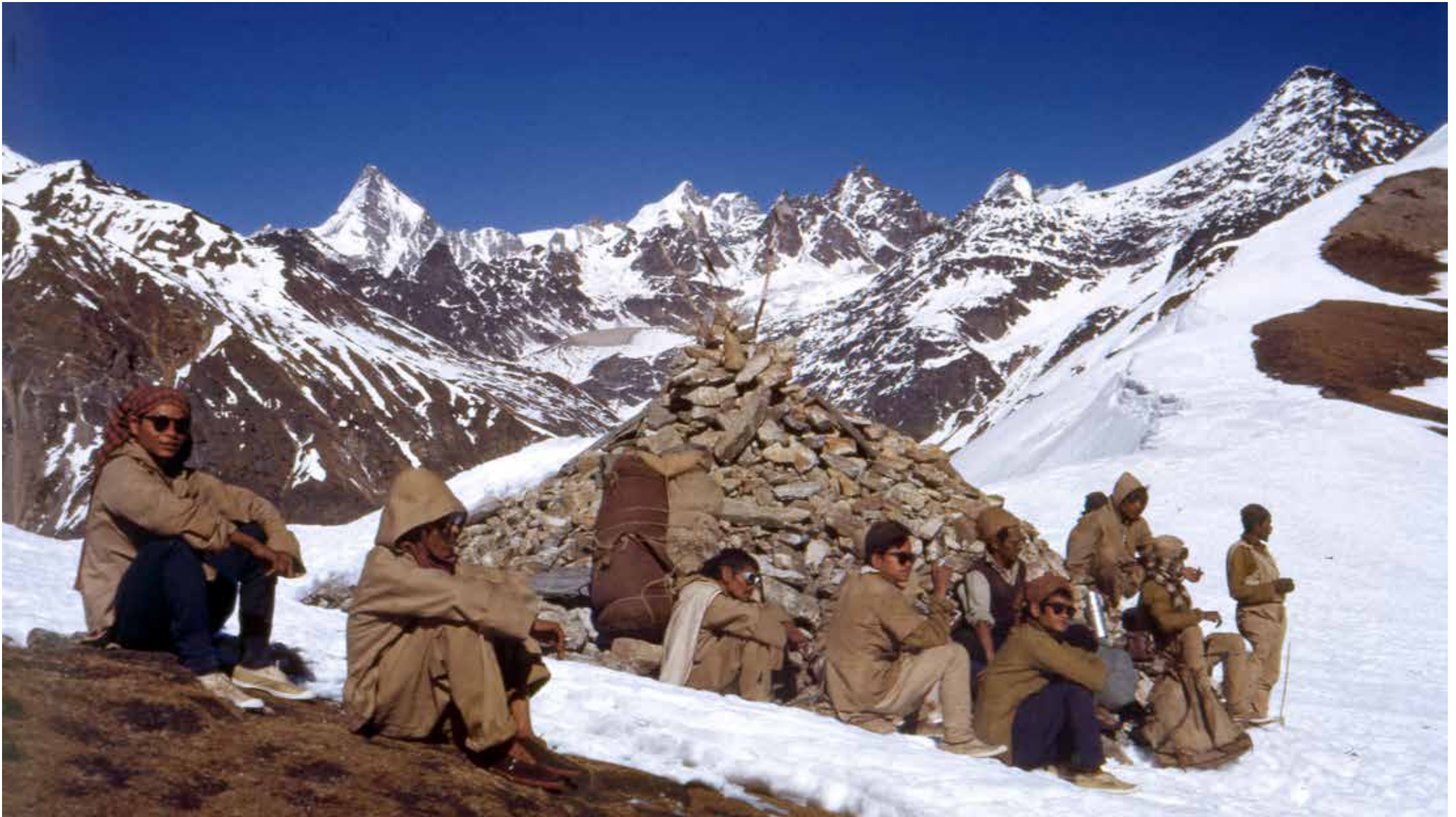
SUN	MON	TUE	WED	THU	FRI	SAT	SUN	MON	TUE	WED	THU	FRI	SAT	SUN	MON	TUE
1	2	3	4	5	6	7	8	9	10	11	12	13	14	15	16	17
			18	19	20	21	22	23	24	25	26	27	28	29	30	31



View from Nyalu La towards north, Thakche upper Limi valley and Lapcha La.

November 2023

WED	THU	FRI	SAT	SUN	MON	TUE	WED	THU	FRI	SAT	SUN	MON	TUE	WED	THU	FRI
1	2	3	4	5	6	7	8	9	10	11	12	13	14	15	16	17
			18	19	20	21	22	23	24	25	26	27	28	29	30	



Toni Hagen with his porters on Sechi La, view towards northeast into Sechi Khola.

December 2023

FRI	SAT	SUN	MON	TUE	WED	THU	FRI	SAT	SUN	MON	TUE	WED	THU	FRI	SAT	SUN
1	2	3	4	5	6	7	8	9	10	11	12	13	14	15	16	17
		17	18	19	20	21	22	23	24	25	26	27	28	29	30	31



January



February



March



April



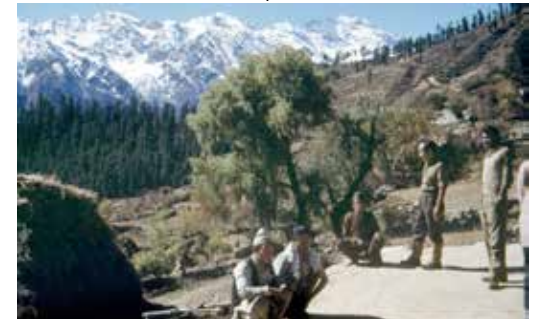
May



June



July



August



September



October



November



December



Toni Hagen
(1917-2003)

Calendar © Toni Hagen Foundation Nepal

Swiss geologist Toni Hagen first came to Nepal in 1950 as part of a technical assistance team sent by the Swiss government. That was an era when foreigners had to seek government permission to travel outside the Kathmandu Valley. As the geologist in the Swiss team, Hagen was allowed to go around the countryside, an experience that whetted his desire to see more of this 'unknown' land. Thus began a relationship with a country that grew into a close friendship over the course of half a century.

Toni Hagen was later taken over by the United Nations making him the original 'UN expert' in the country. He spent nearly a decade travelling more than 14,000 km on foot. His explorations took him all over Nepal and he saw the country like no one else had before him, and very few have since. Hagen's experience of those early days, his geological findings and his views on the society and economy of Nepal have been documented in *Nepal: The Kingdom in the Himalaya* (4th ed, Himal Books, Kathmandu, 1998). Hagen's colour photographs in the book for the first time exposed the social diversity and varied landscape of Nepal. This was a landmark book which introduced Nepal to the world and to Nepalis themselves.

With time, Hagen became deeply involved in the study and practice of development in Asia and elsewhere. But he always kept a keen interest in what was happening in Nepal. He continued to critique Nepal's path to progress and never faltered in his belief that socioeconomic advancement was not possible without genuine democracy achieved through decentralisation. For his contribution to scholarship on Nepal, in 1984, the Royal Nepal Academy awarded him the Birendra Pragyalkar, the highest recognition give by the Nepali state to foreign scholars.

The Toni Hagen Foundation Nepal was set up in 2000 to continue the work begun by Toni Hagen long ago to promote an understanding of the Himalaya and its geography, among Nepalis themselves and in the outside world. This calendar is part of the same attempt and contains pictures taken from the 1950s by Toni Hagen. The slides from the Toni Hagen collection were made available by his family.



Toni Hagen Foundation Nepal
540 Lazimpat, Kathmandu-2, Nepal
tel: +977-1-4440635
tonihagenfoundationnepal@gmail.com